

Workshop #1

Breakout Room

Agency and Foundation Funding (AFF), Research Services

Presented by Drew Gyorke
Wednesday, January 26, 2021

Agenda

- Broad overview of AFF administrative service
- Funding managed by AFF
- Team Structure
 - Teams within AFF
- Common Questions
- Your Questions

Broad overview: AFF services

1. Support the Search for Funding:

- Core Funding Opportunities Database (regular cycle funding opportunities)
- Research Alerts*
- Information Sessions (e.g. SSHRC Insight, NSERC Discovery) working in partnership with the Centre for Research and Innovation Support (CRIS)

2. Apply for Funding:

- Information resource about the funding opportunity, process, Institutional “Sign off”, endorsement driven by **MRA** (required in advance of endorsement).
- Submission where Sponsor requires Institution to do so through online portals.

3. Manage Funding:

- Significant focus for AFF team members
- Agreement negotiation, fund set up (**FReD**), budget adjustments (where req'd), collaboration agreements (“sub-grants”),
- Assist with issues that may arise

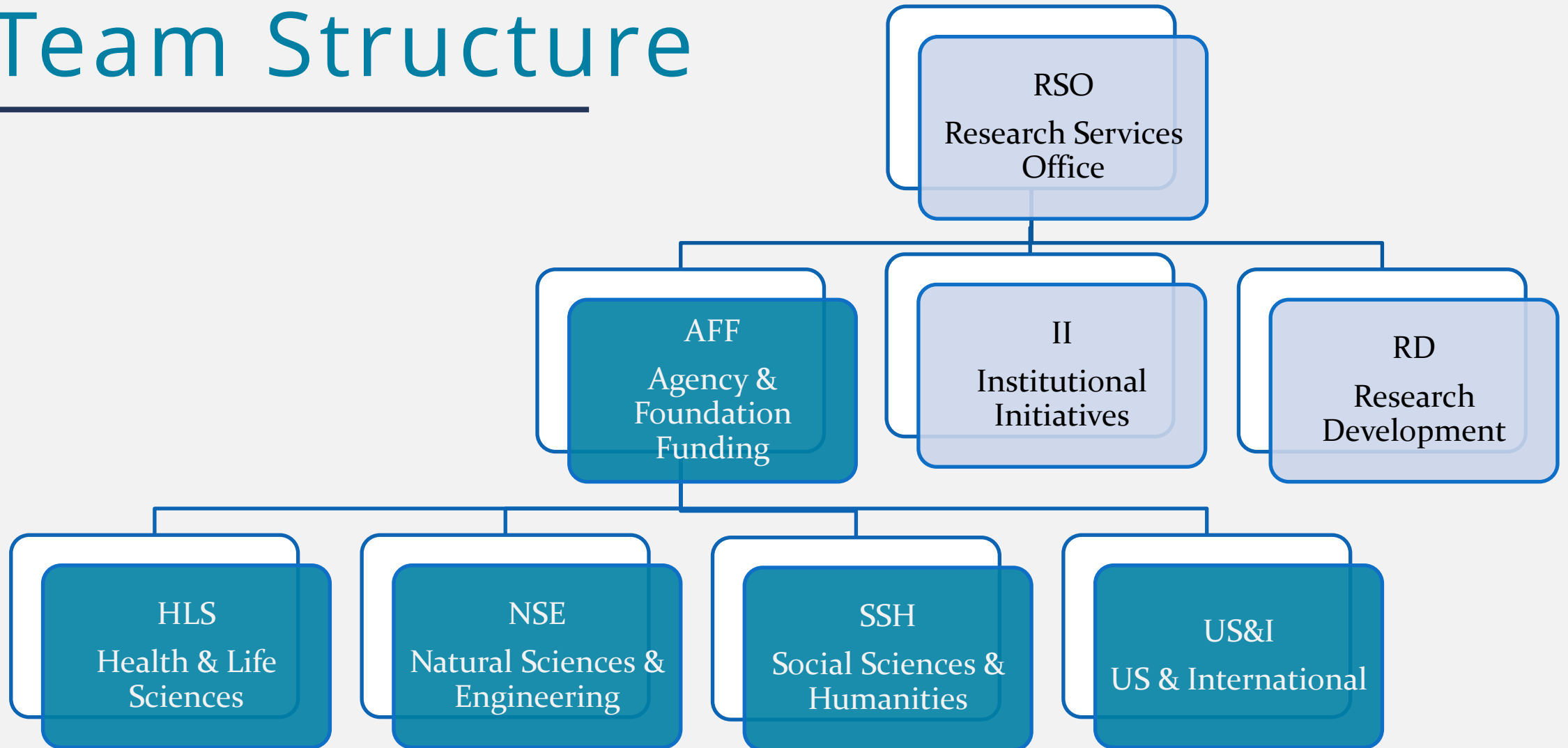
4. Project Close:

- Fund budget reductions where required
- Financial reporting is handled by Research Financial Reporting and Audit
- [Research Funding Life cycle](#)

Funding managed by AFF

- Generally, PI-driven research funding applications and awards that are in response to, or the result of:
 - Open call Program funding, normally competitive
 - Private sector is managed in IPO
 - Foundations (can be an open call, but may result from interest in, or ongoing support of a Principal Investigator's research)

Team Structure



Teams within AFF



Health and Life Sciences

- Tri-Agency: CIHR
- Numerous **domestic** sponsors focused on health and life sciences funding
 - Heart & Stroke, Cancer research foundations, etc.
- Team members:
 - Deanna Pong RFM
 - Samantha Young RFO
 - Laura Weir RFA

Teams within AFF



Natural Sciences and Engineering

- Tri-Agency: NSERC
- Numerous **domestic** sponsors focused on natural sciences and engineering funding
 - Environment and Climate Change Canada, MTO, etc.
- Team members
 - RFM: Jessica Keating
 - RFO: Keti Dzamova RFO
 - RFA: Rochelle Carvalho (50%)

Teams within AFF



Social Sciences and Humanities

- Tri-Agency: SSHRC
- Numerous **domestic** sponsors focused on social sciences and humanities funding
 - IDRC, Killam, etc.
- Team members:
 - RFM: Sarah Scott
 - RFO: Mark Bold,
 - RFO: Shanna Pritchard (50%)

Teams within AFF



US and International

- US and International funding sponsors including NIH, US government, European sponsors, and many other **non-domestic** sponsors across all disciplines.
- Team members:
 - RFM: Krista Montgomery
 - RFM: Claudia Donnerhack (Loredana Polidoro on leave)
 - RFA: Christine Kwan

Common Questions

- **Who do I contact?**
 - Reach out to the team that handles your discipline area, [Contact us](#)
- **Why is there an internal deadline?**
 - Institutional endorsement in order to meet sponsor deadline
- **Can Research Services waive indirect costs?**
 - No. Any discussion about variation in indirect costs is held at the Division level
- **What's the difference between RSO (AFF) and IPO?**
 - IPO manages funds from private sector or with private sector objectives, and commercialization.
- **“Who has to sign this?”**
 - Research agreements, applications, other binding documents are signed by the appropriate unit in the Division of the VPRI.

Questions?