

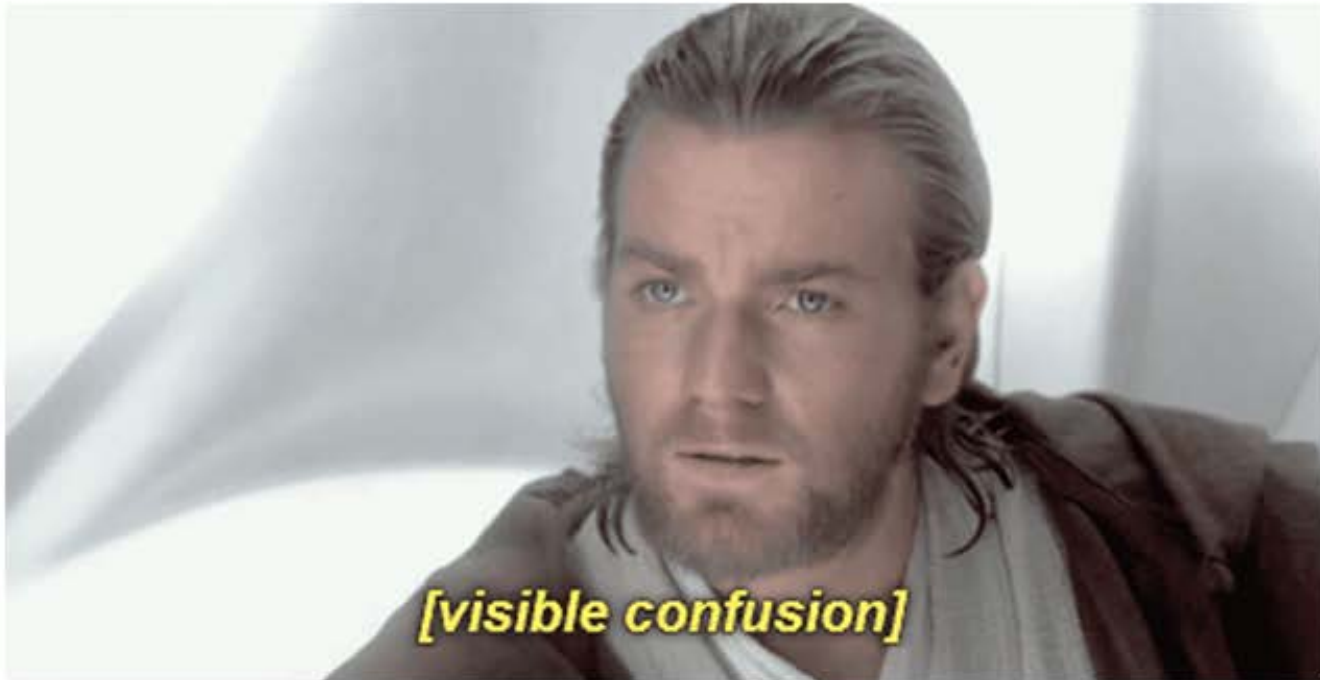
VPRI Newsflash



R & I Dashboards

Maya Collum, Senior Research Information Analyst

Why dashboards?



Vision

Timely

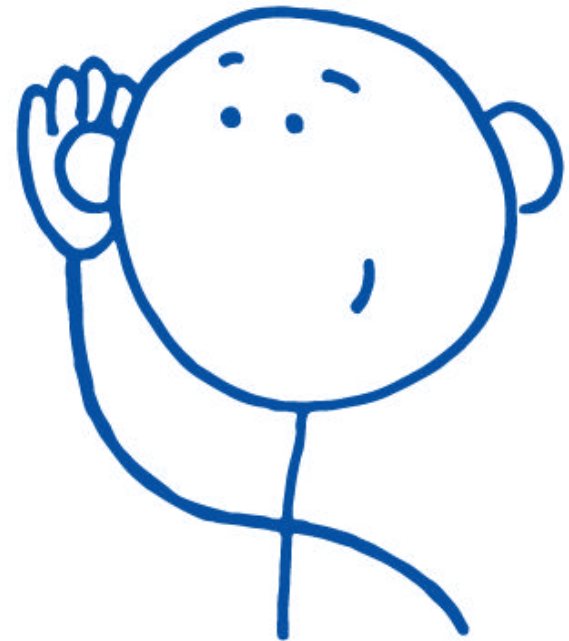
Holistic

Comparative data

Division-centric

Forward-facing

Easy to use and integrated!



We launched!

Research & Innovation Dashboards

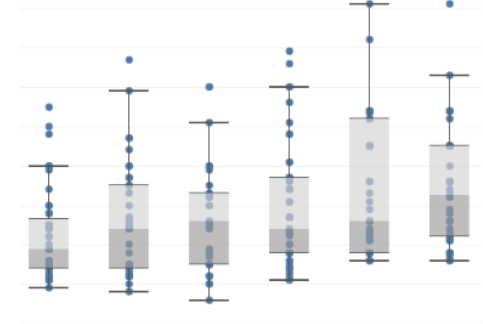
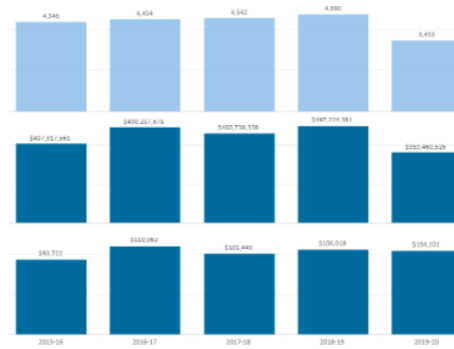
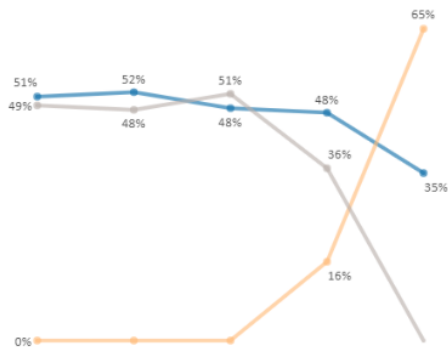
[Home](#) [Accessibility](#) [Terms of Use](#) [U of T Business Intelligence](#) [VP Research & Innovation](#) [Edit](#)



Page details

Welcome to the Research & Innovation Dashboards!

This is your home for interactive research & innovation dashboards that enable self-service data analysis for data-informed decision making. We will continue to deploy new dashboards and content - check in regularly.



Applications Dashboards

These dashboards allows users to gauge the volume and status of research funding applications received at the VPRI.

- [Applications Overview](#)

Funds Awarded Dashboards

These dashboards allows users to gauge the volume and value of research funding grants administered by the VPRI and partner hospitals.

- [Funding Overview](#)

Market Share Dashboards

These dashboards provide information on U of T's share of national tri-agency funding, participation rates, and success rates in five key competitions.

- [Market Share](#)



**DIVISION OF THE VICE-PRESIDENT,
RESEARCH & INNOVATION**

More to come

More funding data

New research data

Cube 2.0

Roll-out to departments



uoft.me/ResearchInnovationDashboards