



Leadership in a Research-Intensive Environment

Giovanna Sebastiani, Director Administration, D2R

CFREF Symposium
May 27, 2025



LEADERSHIP

Resource Interdisciplinary Equity Academic
Diversity Sustainability Inclusion Transparency Responsibility Management Influence
Scientific Academic
Partnerships Science Networks Development
Strategic Talent
Accountability Open Social Ethical Communication Research Funding
Thinking Credibility
Psychological Collaboration Infrastructure Mentorship

WHAT ARE THE CHALLENGES AND OPPORTUNITIES ASSOCIATED WITH LEADING IN A HIGH-IMPACT RESEARCH-INTENSIVE LIKE D2R?

ABOUT D2R

Project: *D2R | DNA to RNA : An Inclusive Canadian Approach to Genomic-based RNA Therapeutics*

Funding: \$165 million from the Canada First Research Excellence Fund



Period: 2023-2030

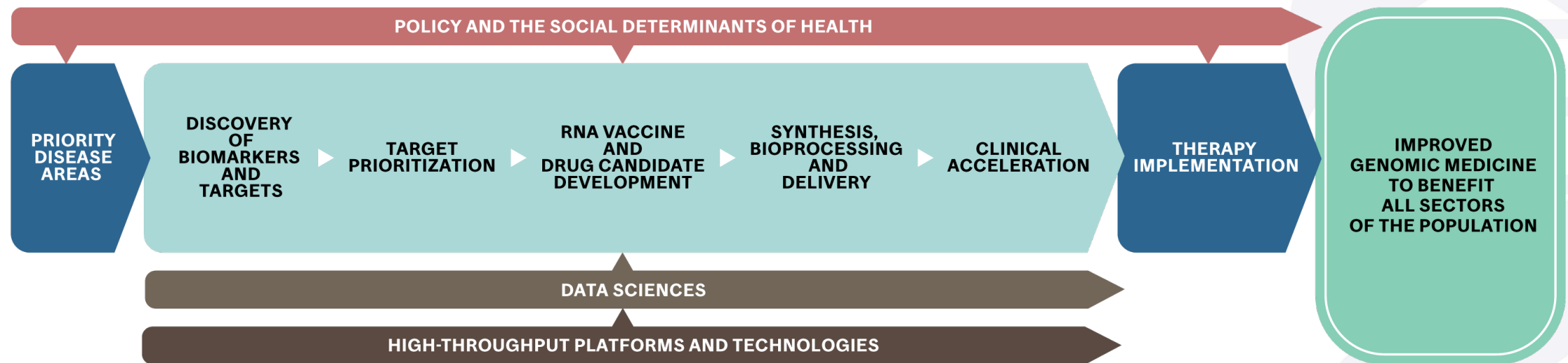


VISION

To deliver genomic-based **RNA therapies to benefit the health of different populations** affected by infectious, rare and neglected diseases, or those who have common chronic diseases such as cancer.



INTERDISCIPLINARY RESEARCH FRAMEWORK



PARTNERS

Canadian

Private Sector



International



Academic Institutions



Public Sector



Attractivity of the academic-industry interface

Strong clinical research and knowledge translation partnership

Globalization of the effort

CHALLENGES

1. Coordinating Interdisciplinary Collaboration – balancing scientific freedom with strategic direction
2. Managing a large multi-stakeholder Initiative – variety of partners
3. Driving innovation while maintaining scientific rigor
4. Building inclusive practices
5. Accelerating translation and commercialization – Translating research into real-world impact.
6. Sustaining long-term momentum

OPPORTUNITIES

1. Advancing Scientific Knowledge and supporting Breakthrough Innovation
2. Mentorship, Talent Development and Retention – attracting top-tier talent.
3. Building an integrated and collaborative network (strong partnerships)
4. Global recognition: Elevate the institution's and the leader's reputation on a global scale.

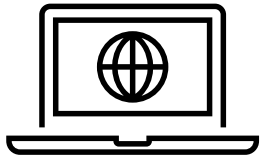
KEY QUALITIES

1. Scientific Credibility
2. Strategic Vision
3. Inclusive and Ethical
4. Collaborative
5. Communication and Influence
6. Oriented towards Innovation
7. Resilience and Adaptability

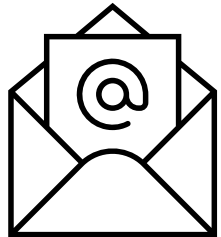
CONCLUSION

- Effective Research Leadership is crucial to advancing scientific and academic goals
- Unique challenges exist in research environments but if handled correctly can lead to innovative and impactful outcomes.
- Vision, Strategic Planning, Adaptability and Collaboration are all important factors for success

THANK YOU



www.mcgill.ca/D2R/



D2R@mcgill.ca

Subscribe to the
D2R mailing list

